

FLORIDA ARCHITECT

JOURNAL OF THE FLORIDA ASSOCIATION OF THE AMERICAN INSTITUTE OF ARCHITECTS

FALL, 1983



1983 Awards for Excellence in Architecture

Landmark First National Bank
Pembroke Pines, Florida

Architect

Docter, Richey, Sippel, Architects/Planners

Landscape

Lieber & Uecker,

Landscape Architects

Owner/Developer

Landmark First National Bank

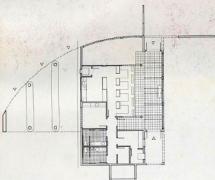
General Contractor

B.R. Starnes Company of Florida

The main consideration with this small branch bank was to consolidate three basic sections of the building: the "gallery" type lobby with its large rectangular windows, smaller clerestory windows and entry doors, the main "body" of the bank housing all the tellers, offices and ancillary functions with large glass block windows and the "wing" section which hovers over the drive-in tellers. The three sections are joined together by a curving wall that, at the entrance, steps down and intersects with a wall which is "pulled out" from the inside, indicating the line of intersection between the gallery and the main body of the building. This wall along with the stepping wall creates the main entrance to the building.

Jury Comments

"A very controlled sculpture that makes banking fun. A nice sting of an interesting object as a solution to the classic problem."... James Nagle. "An interesting version of the international style in Florida vernacular with flying buttress wall reaching beyond the building. It is a footprint echoing Wright."... Harry Weese.



FLOOR PLAN